



*Maistro Alucast*

**MAISTRO ALUCAST PVT. LTD.**

# Company Profile

*Delivering Excellence....*

Date: 13<sup>th</sup> Oct-2021



## BRIEF SUMMARY



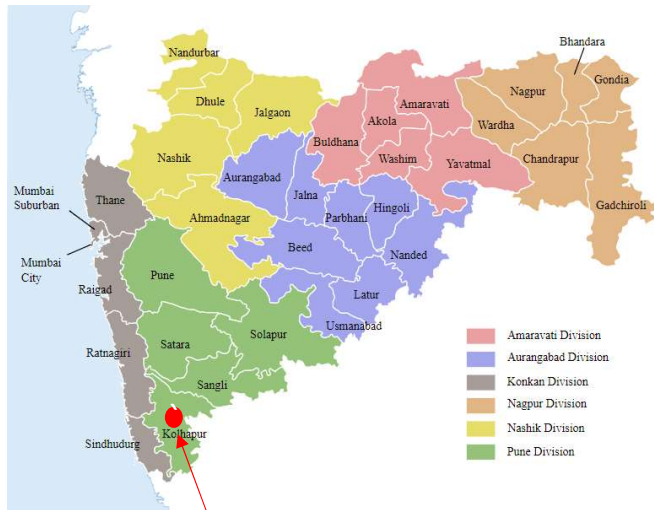
SR. NO	DESCRIPTION	CAPACITY/SIZE
01	COMPANY ESTABLISHED	Year: 2021
02	CAPACITY	Installed Capacity : About 35 M.T. /Month (PDC) Installed Capacity : About 15 M.T. /Month (GDC) [We are doing the GDC work with our associate company M/s Krishna Alcast.]
03	PRODUCTS & RANGE	Manufacture of Aluminium Cold Chamber High Pressure Die castings & Gravity Die Casting finished products in first phase. The product range will be from 0.02 kg to 1.5 kg each piece. (PDC) The product range will be from 0.13 kg to 15.0kg each piece. (GDC)
04	LAND AND BUILDINGS	The total area of the Plot is 7500 Sq. Ft. In the plot a Heavy-duty Industrial Shed for production of size 3500 Sq. ft. is erected. There are also other buildings such as Office, Stores, Security Cabin, and Laboratory etc. The open space is also available for further expansion.
05	POWER & WATER	The power is taken from MSEDCL of 130 HP ,Sufficient water is available for 24 hours from own Bore with RO Plant.

## BRIEF SUMMARY



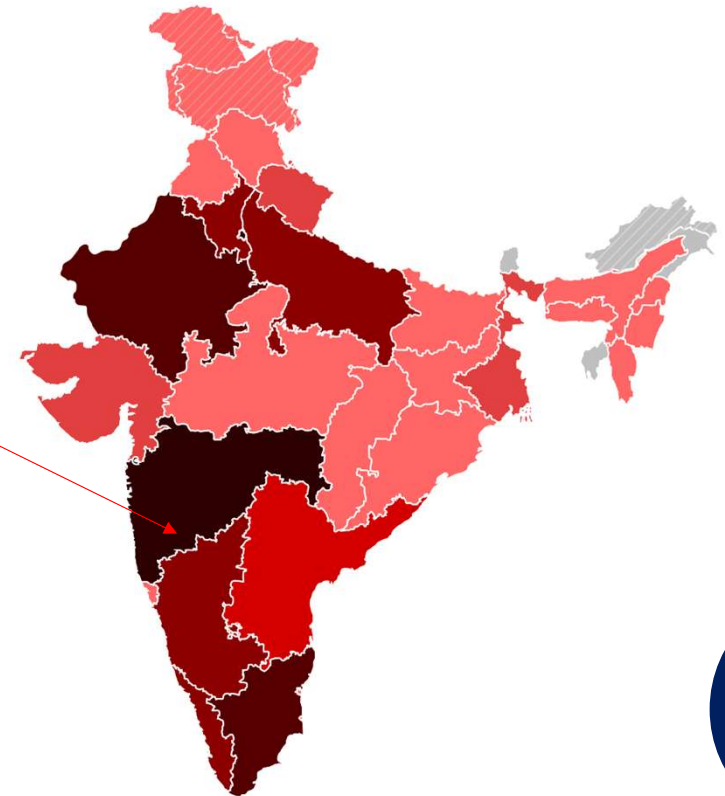
SR. NO	DESCRIPTION	CAPACITY/SIZE
06	PLANT & MACHINERY	250T machines are available for production and listed under Key Machines List.
07	MANPOWER	The present Man power is as under : STAFF: 05 and WORKERS : 15
08	FUTURE PLANS	We will procure another 350T & 160T HPDC Machine till end of the 2023~24 year, as well as we will start the SB & Machining process in-house. We are interested to provide our customers the complete die casting solutions as per their needs and specifications and always open for implementing their valuable inputs.

## COMPANY LOCATION

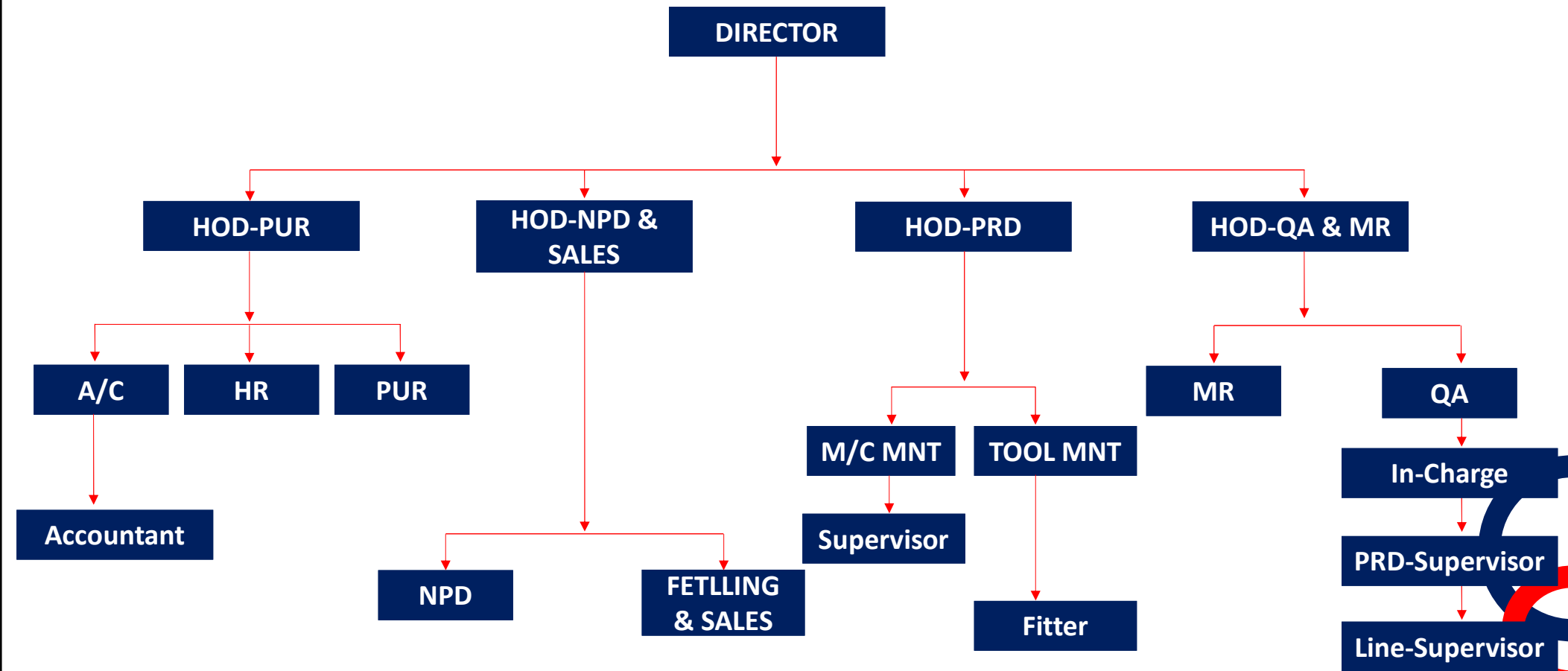


### Company Location :

- State : - Maharashtra
- Dist: - Kolhapur
- Tehsil: - Hatkanangale
- Mangaonwadi – (Pin Code- 416118)
- International Airport : Mumbai ( 430 Kms)
- International Airport : Pune ( 230 Kms)
- Domestic Airport : Belgaon (120 Kms)
- Domestic Airport : Kolhapur ( 28 Kms)



## ORGANIZATION STRUCTURE





**Mr. Jagdish Khondre**  
Director  
Experience: 22 Year  
in manufacturing  
Industries



**Mr. Mitesh Patel**  
Director  
Experience: 10 Year  
in die casting  
Industries



**Mr. Uttam Patel**  
HOD-PRD  
Experience: 07 Year  
in die casting  
Industries

## MAPL QMS POLICY

We at **M/s Maistro Alucast Pvt. Ltd.**, is committed to achieve Total Customer Satisfaction & effective implementation of Quality, Environment and Health Safety Management System to build a world class organization.

To achieve this, we shall;

- Meet the expectations of our customers by offering cost effective quality products and services.
- 100% on time delivery of Quality product to ensure customer satisfaction.
- Adopt latest technologies and the best international practices as a way of life.
- Adopt quality in the manufacturing process and minimize dependence on inspection.
- Continual improvement in effectiveness and performance of Quality, Environment & Health Safety management systems is the responsibility of each one of us.
- Prevention of pollution, protection of environment & minimization of health injuries and ill health.
- Improving skill & involvement of employees for the benefit of organization through training & motivation.
- Conservation of natural resources and minimization of all wastages through effective utilization of resources.
- Comply with applicable legal & other requirements.



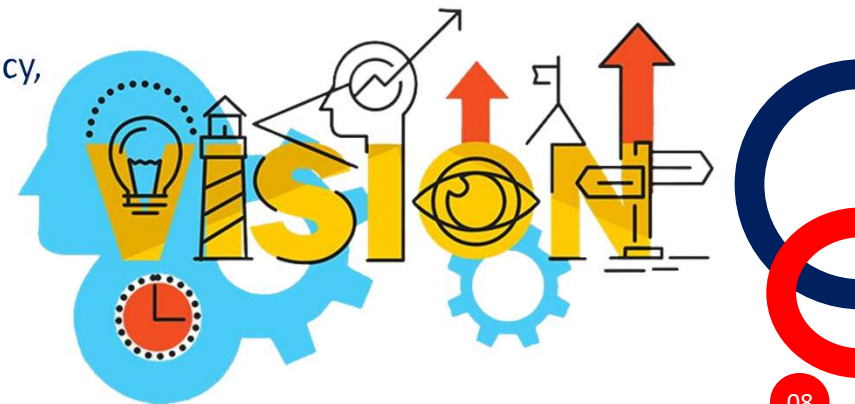


## OUR VISION & MISSION

At **Maistro Alucast**, we are committed to delivering high-quality products and services that meet or exceed our customers' expectations. We take pride in our work and stand behind it with confidence and integrity. Our goal is to achieve customer satisfaction in every project we undertake.

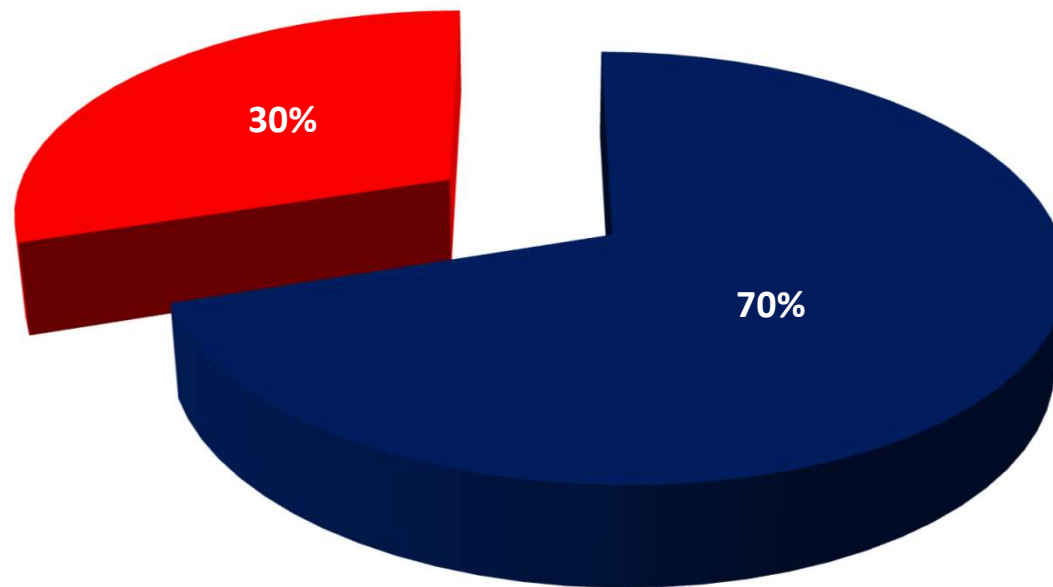
Our staff are experts and competent in their fields of work. We ensure quality assurance by providing them with continuous training and support. We strive for excellence in everything we do.

At MAPL, we are committed to delivering high-quality metal castings using innovative systems and techniques that are efficient and cost-effective. We aim to be the preferred employer and partner by adhering to our core values of putting our employees first, fostering trust, ensuring transparency, embracing flexibility and creating value.





## PLANNED BUSINESS SECTOR



■ Automotive ■ Non- Automotive

Maistro Alucast Pvt. Ltd.

## OUR VALUABLE CUSTOMER



## PART GALLERY-PDC



Projector Lamp (Bajaj)



Cable Bracket (Mahindra)



Oil Filter Module (Mahindra)



Hinge Arm (Mahindra)



Shock Absorber (Piaggio)



Control Housing (Mahindra)

## PART GALLERY-PDC



Clutch Lever (Piaggio)



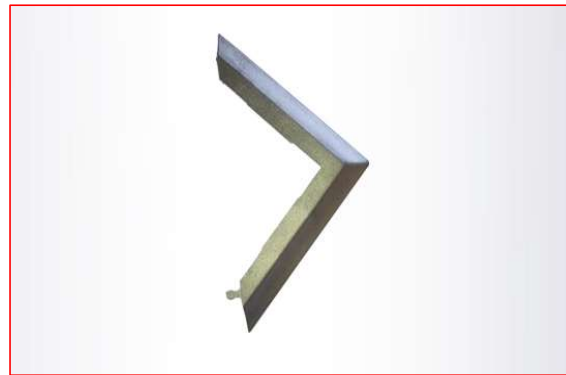
Gear Shift Lever (Piaggio)



Window Lock



Fan Blade



Post Trim-3.5"



Post Trim-2.5"

Maistro Alucast Pvt. Ltd.

## PART GALLERY-PDC



Bearing Block



Handwheel-02160



Handwheel-3140



Impeller-1



Impeller-160



Rotar-70



Packing Lock



Rear Number Plate



Terminal Box



Terminal Box Cover



## KEY MACHINE GALLERY



BMC 250T



SKR-300 KG



Compressor-15HP



Jib Crane-2 Ton



RO Plant



Belt Grinder

Maistro Alucast Pvt. Ltd.

## KEY MACHINE LIST



SR. NO	MACHINE NAME	MAKE	SPEC	YEAR OF PURCHASE
01	HPDC -1	BMC	250T	2021
02	MELTING FURNACE	SKR	300 KG	2021
03	COMPRESSOR	ELGI	15HP	2021
04	JIB CRANE	SS	2 Ton	2021
05	RO PLANT	AQUA SAFE	500 LPH	2021
06	BELT GRINDER	RAJLAXMI	2.5HP	2021

## ASSOCIATED TOOL ROOM MACHINE GALLERY



VMC Machine (BFW)



EDM Mega Zero



Surface Grinder



Lathe Machine



Milling Machine



M1 TR Machine

## ASSOCIATED TOOL ROOM MACHINE LIST

SR. NO	MACHINE NAME	MAKE	SPEC	NO. OF QTY
01	VMC	BFW	1050 X 650 X 650	4
02	VMC	BFW	1500 X 800 X 710	1
03	EDM WIRECUT	ULTIMA 2	700 X 450 X 350	1
04	EDM MEGA ZERO	ELECTRONICA	***	1
05	EDM SMART ZNC	SPARKONIX	***	1
06	EDM MEGA ONE	ELECTRONICA	***	1
07	SUFRACE GRINDER	KENT	800 X 400 X 350	2

## ASSOCIATED TOOL ROOM MACHINE LIST

SR. NO	MACHINE NAME	MAKE	SPEC	NO. OF QTY
08	MILLING MACHINE 2 NO	VERNIER	***	2
09	JIG BOARING	SHIP	1000 X 850 X 750	1
10	LATHE MACHINE	MONA	5 ½ FT	2
11	RADIAL DRILLING MACHINE	SATYAPRAKASH	40 MM	3
12	M1 TR MACHINE	FOSTER	NO 4	3
13	EOT CRANE	LIFTLINK	5 TON	1
14	CAD/CAM SOFTWARE	SEMENCE /DEL-CAM	UNIGRAPHIX	5

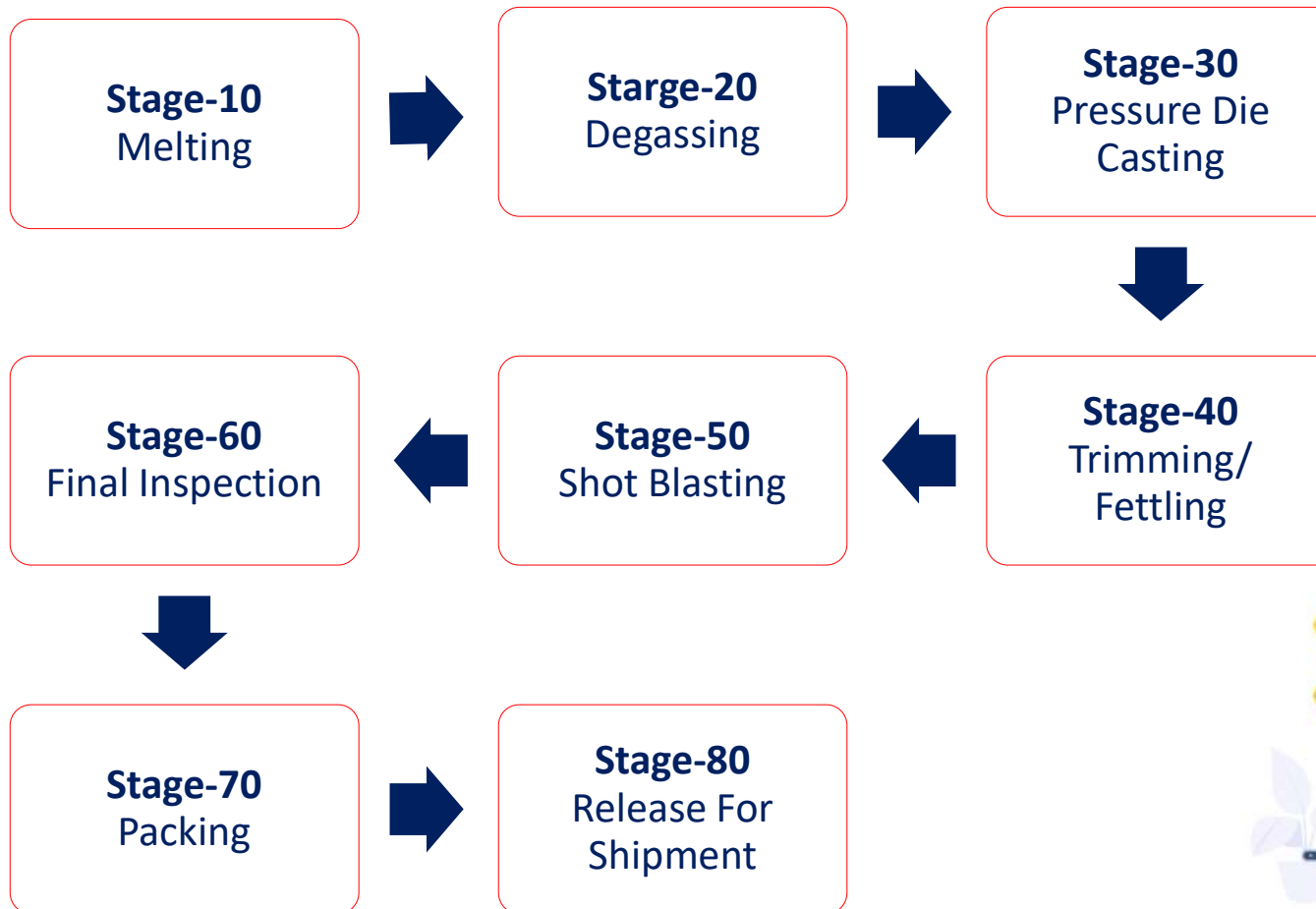
## COMMITMENT TO QUALITY

Quality is at the heart of everything that we do at Maistro. For Pressure Die Cast components quality requirement, Maistro has in place an advanced and integrated Quality Control System. This system is operational with the help of facilities which include:

- Height Gauge
- Surface Plate
- Digital Vernier
- Depth Vernier



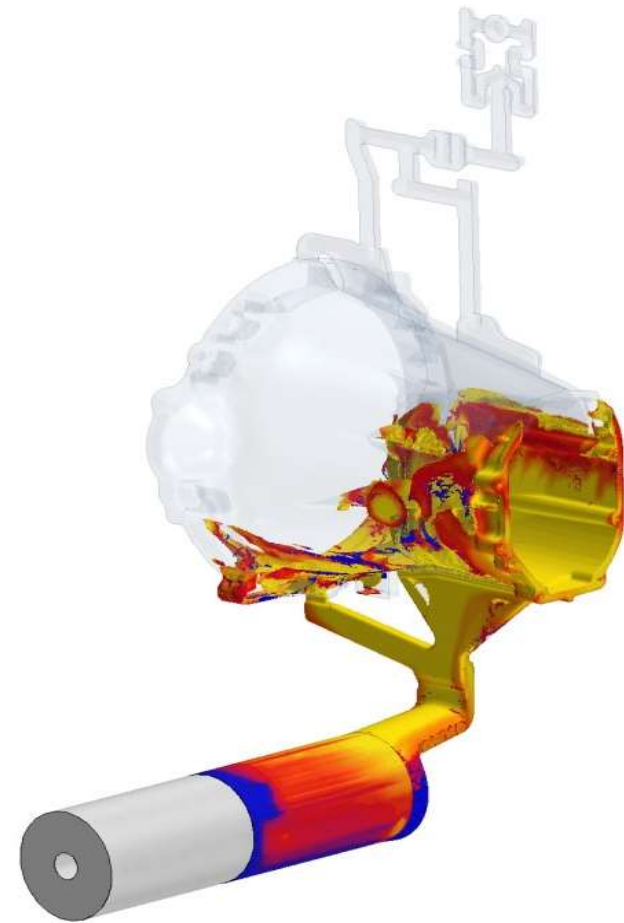
## PROCESS FLOW



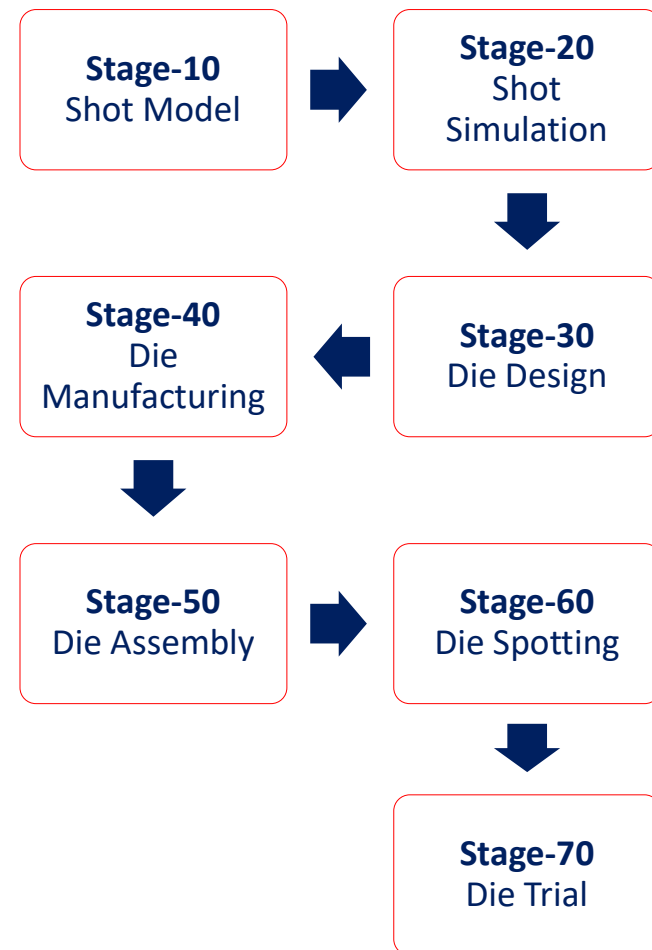


## PROCESS FLOW

- ✓ **Metal Flow**
- ✓ **Filling Analysis**
- ✓ **Metal Velocity**
- ✓ **Temperature**
- ✓ **Solidification Analysis**
- ✓ **Air Entrapment Analysis**
- ✓ **Surface Defect Analysis**



## PROCESS FLOW FOR DIE MAKING



### MAISTRO ALUCAST PVT. LTD.

Mangaonwadi G. No/0397, H.No-190  
Tal-Hatkanangale Mangawwadi-416118  
Dist – Kolhapur (M.S.) India.

- **Phone No.** ☎ ---
- **Mobile No.** 📞 +91 9970133742, +91 8329444731
- **E - Mail.** ✉ jagdish.maistroalucast@gmail.com, mitesh.maistroalucast@gmail.com
- **Web.** 🌐 [www.maistroalucast.com](http://www.maistroalucast.com)



# Thank You!



# A/P Mangaonwadi, Dist: Kolhapur  
Pin Code: 416 118



+91 9970133742  
+91 8329444731



jagdish.maistroalucast@gmail.com  
mitesh.maistroalucast@gmail.com

Maistro Alucast Pvt. Ltd.

